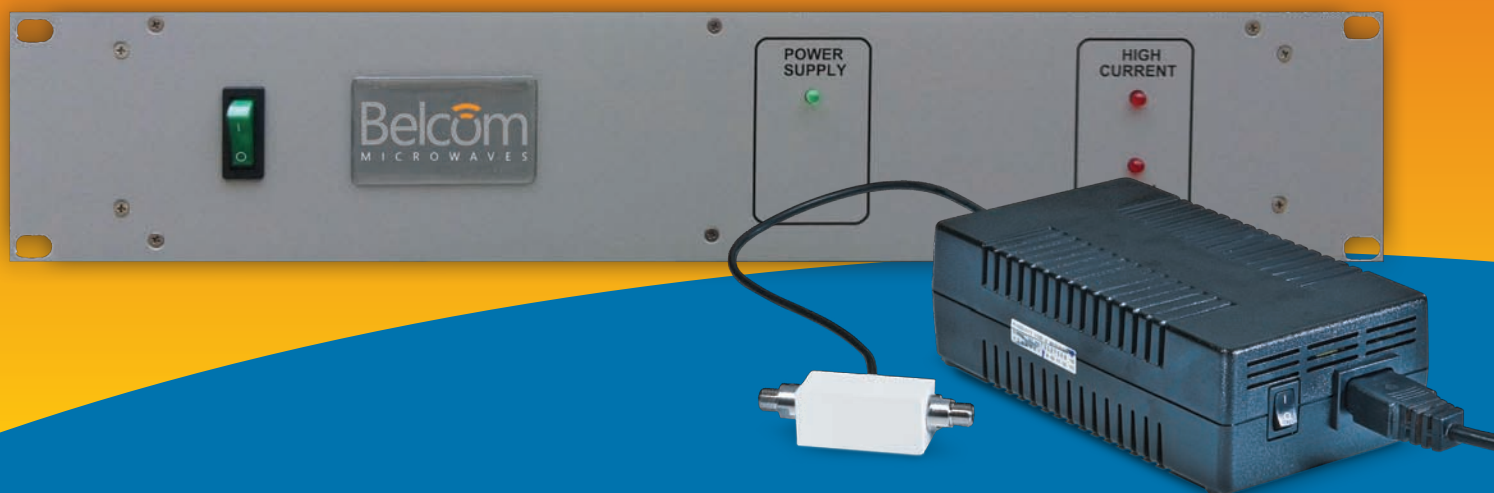


BUC Supporting Accessories

Play It Simple!



Order your BUC and accessories from Belcom Microwaves, to ensure fair prices and compatibility.

Belcom's accessories family, made to support its low and medium power BUCs, is designed to provide you precisely with the equipment you need for any application.

Need to power a medium power BUC through the IFL cable at the modem output? Use our A1007 - 350 Watts DC inserter, already running in the field for years!

Got to talk to your BUC? Belcom's M&C PC software for monitoring and controlling our new C-Band and Ku-Band series are available.

Want to obtain 100% serviceability? Consider installing our A1122 redundancy system with the ability to locate a failure and switch to a backup LNB or BUC, manually or automatically.

Built to be robust and reliable, Belcom Microwaves accessories are rugged enough to comply with its reputed SPARK and FLAME BUC series.

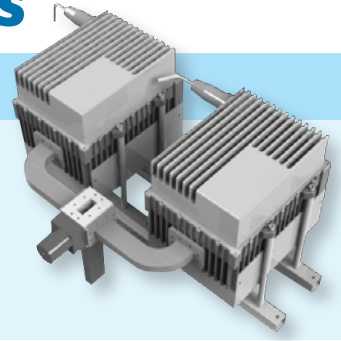
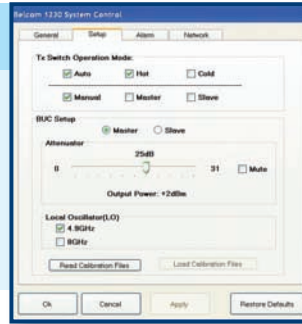
These products are covered by a full two-year warranty and are backed by our dedicated service team that ensures full repair cycle within 21 days maximum.

Several solutions to power a BUC for a few bucks are available... see overleaf.

Belcom Microwaves BUC Accessories

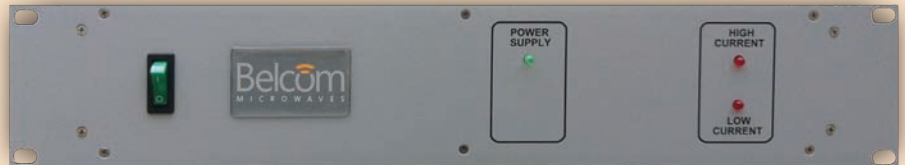
A1122 – Redundancy System

TX and RX waveguide switch control
Internal 10MHz reference oscillator - Optional
Two 250 Watt redundant DC power supplies
Manual and automatic operation modes
Simple and intuitive interface



A1007 – DC Inserter / Power Supply

19" rack mounted (Indoor unit)
Internal power supply – 350 Watts
Internal 10MHz reference – optional
Low IF and reference insertion loss
Input and output connectors available
in F-type and N-type



A1062 – Power Inserter Kit

Kit includes DC inserter, 150 Watts power supply,
AC power cord and an IFL cable.
Low IF and reference insertion loss
150 Watt desktop power supply



A1039 – DC Inserter

24V, 200 Watt power Supply - optional
10 MHz TCXO
16dB IF gain



A2068 – Bias T

For test and laboratory use
DC input – 60 Volt maximum
Wide range – 950 to 2100 MHz (optional)
SMA reference connector
75 Ohm F type or 50 Ohm N type
output connector

