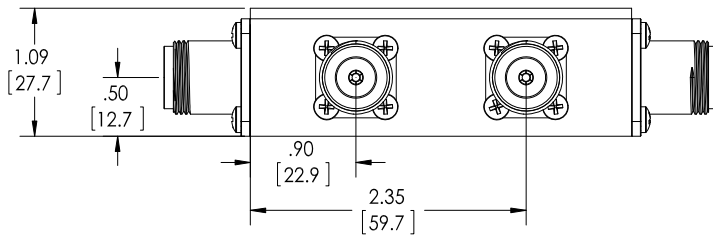
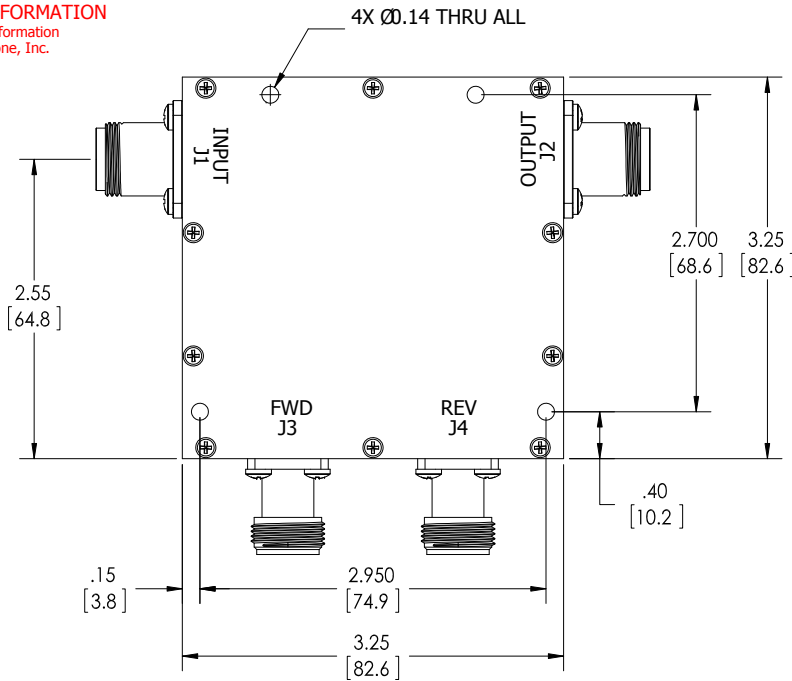


RESTRICTION ON USE, DUPLICATION OR DISCLOSURE OF PROPRIETARY INFORMATION
 This document contains proprietary information which is the sole property of Werlatone, Inc.



PRELIMINARY DWG. SPECIFICATIONS MAY CHANGE PRIOR TO DWG RELEASE.

NOTES: UNLESS OTHERWISE SPECIFIED

1. MATERIAL: ALUMINUM
2. SURFACE FINISH: CHEM FILM PER MIL-DTL-5541F TYPE II CLASS 3 (CLEAR)
3. CONNECTORS: ALL N FEMALE

REVISION HISTORY			
REV.	REVISION RECORD	DATE	APPROVED
-	INITIAL RELEASE	8/28/2014	SC

Model C10770W-10
40 dB Dual Directional Coupler

Electrical Specifications:

Frequency:	1000 - 2000 MHz
Power:	500 W CW
Coupling:	40 ± 1.0 dB Nom.
Flatness:	± 0.5 dB Max.
Insertion Loss:	0.2 dB Max.
VSWR (M):	1.20:1 Max.
Directivity:	20 dB Min.

Watertight Design, O-Ring Sealed
Humidity Rating: 100% Condensing



WERLATONE | SINCE 1965

UNLESS OTHERWISE SPECIFIED		DWN	DATE	WERLATONE SINCE 1965 17 Jon Barrett Rd Patterson, NY 12563
• INTERPRET DRAWING LAW MIL-STD-100 • DIMENSIONING PER ASME Y14.5M-2009 • PARENTHEICAL DIMS FOR REF ONLY • DIMENSIONS ARE IN INCHES (mm) • DIMENSIONAL LIMITS APPLY BEFORE PROCESSES • TOLERANCES: ANGLES ± 2° 3 PL. ± .005 (13) 2 PL. ± .015 (38) • REMOVE ALL BURRS AND SHARP EDGES R.01 MAX • CONCENTRICITY MACHINED DIA. .002 FIM • MACHINE TOOL MISMATCH .003 MAX		SC	8/28/2014	
NEXT ASSY		ENGR	DATE	TITLE
USED ON		BW	8/28/2014	
APPLICATION		RFGR	DATE	SIZE
THIRD ANGLE PROJECTION		QA	DATE	CAGE CODE
		RLSE	DATE	DWG NO
				B 28812 21246-500
				REV
				-
				SHEET 1 OF 1