



**Melcom Appointed As Exclusive UK & Ireland Representative**

- **Millimetre Wave Products** -
  - Antennas -
  - Amplifiers -
  - Coaxial components -
  - Frequency converters -
  - Control & Ferrite devices -
  - Oscillators -
  - Sensors -
  - Test Equipment -
  - Wave guide components -
- Doppler Radar Target Simulators -



**Latest Wolfspeed News**

- New C Band Radar GaN MMIC Power Amp -
- New L Band 1.4 kW GaN HEMT Power Amp -
- Interactive workshop on utilising GaN devices in RF Power Systems to improve performance & lower cost -
  - Video chat with VP & Cree Senior Management -
- New LDMOS Doherty Transistors -



**Launch of New Capacitor Range**

- New NHB Series, NPO Dielectric Range Capacitors -
- MIL 39006 Qualified, Wet Tantalum Capacitor Range -
- European source for single or multi-layer Ceramic Capacitors at short lead times -



**Introducing HA7062D PNA**

- Phase Noise Measurement up to 40 GHz -
- Fast measurement speed -
- Easy to use interface -
- 3 yr warranty -



**New Hybrid Coupler QH11489**

- 90° Hybrid Coupler 80-1000 MHz -
- 600 W -
- 0.6 dB max insertion loss -
- Amplitude balance 0.65 dB typ -



**Introducing S5180 VNA & New Bias Tees**

- 2 port 18 GHz compact VNA -
- Bias Tees ranging from 10 MHz to 6.5 GHz, 9 GHz, 20 GHz & high current 10 MHz to 6.5 GHz -



**Launch of New Series Broadband Conical Inductors**

- X Series High RF Power Broadband Conical Inductor -
- G5 Series High Current Broadband Conical Inductor -
- G5 Series Low Current Broadband Conical Inductor 65 GHz -
- G100 Series Broadband Conical Inductor -



**Introducing New Range of RF/Microwave MMW Filter Products**





## MELCOM APPOINTED AS EXCLUSIVE UK AND IRELAND REPRESENTATIVE

Sage Millimeter Inc is focused on developing high performance microwave and mmW components and sub-assemblies for Commercial and Defence applications.

Sage's product portfolio includes standard and custom designed products.



Click below for Product Catalogue



LEARN MORE ABOUT SAGE MILLIMETER



LATEST WOLFSPEED NEWS

## New LDMOS Doherty Transistors Offer High Power in a Compact Package

### New PTRA097008NB & PTRA087008NB



[Learn More](#)

### Key Specifications

- LDMOS Asymmetric Doherty Transistors
- Cellular Power Amplifiers applications
- 920-960 MHz & 755-805 MHz
- Offering peak output powers of more than 600 W
- Offers high efficiency & gain with unmatched ruggedness
- Offered in a thermally overmolded package

## Live Demos of New Power Amplifiers

- New C-Band Radar GaN MMIC Power Amp Demo.
  - 50 W C-Band Amplifier for radar applications with greater than 45% efficiency

[WATCH DEMO HERE](#)

- New L-Band 1.4 kW GaN HEMT Power Amp Demo.
  - 1400 W, 960-1250 MHz

[WATCH DEMO HERE](#)

## Interactive Industry Workshop On Utilising GaN Devices Within RF Power Systems To Improve Performance & Lower System Costs.

[CLICK HERE FOR WORKSHOP SLIDES](#)

## Video Chat From the IMS Conference with Wolfspeed's Vice President & Senior Director

[WATCH THE CHAT](#)



**EXXELIA INTRODUCE NEW NHB SERIES & WET TANTALUM CAPACITOR RANGE**

### NHB Series - NPO Dielectric Range



[Click Here For Datasheet](#)

### Key Specifications

- Multi-layer Ceramic Capacitors, based on NPO dielectric material.
- Providing a very high self resonant frequency, limiting the parasitic resonant frequencies.
- Available in 1111 size with capacitance ranging from 0.3pF to 100pF.
- Excellent performance for RF power applications at high temperature up to 175°C & at 500 VDC.

### MIL 39006 - Qualified Wet Tantalum Capacitor Range

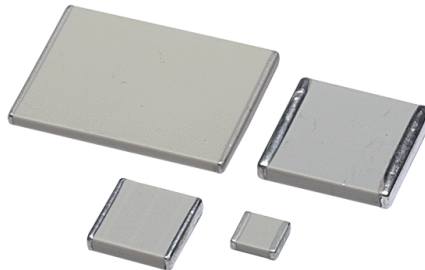


Click Here For [MIL 39006/22](#) Datasheet  
Click Here For [MIL 39006/25](#) Datasheet

### Key Specifications

- M-Level (1.0%/1000h) qualified
  - MIL-PRF-39006/22
  - MIL-PRF-39006/25
- 6V to 125V, large temperature range -55°C to 125°C
- High vibration and shock application
- Low ESR
- Low dc-leakage
- More capacitance
- Available now

**Melcom supply broad portfolio of Single & Multi-layer Ceramic Capacitors with fast lead times.**



[Click Here For Full Range of Ceramic Capacitors](#)

[Contact MELCOM](#) for detailed specification, pricing and availability

**LEARN MORE ABOUT EXXELIA**



**HOLZWORTH'S LATEST PHASE NOISE ANALYSER HA7062D IS CAPABLE OF MEASUREMENT UP TO 40 GHz**



- DUT Tuning Range: 10 MHz to 40 GHz
- Measurement Floor: <-195dBc/Hz (as measured)
- Measurement Speed (per correlation): <1s (100Hz-100MHz), <5s (10Hz-100 MHz)
- Measurement Offset: 0.1 Hz to 100 MHz (z540.1 calibrated for NIST traceability)
- Measurement Types: Absolute, Residual, AM, Baseband, Jitter, Spurious
- 3 Year Warranty

[Click Here For Datasheet](#)

[Contact MELCOM](#) for detailed specification, pricing and availability

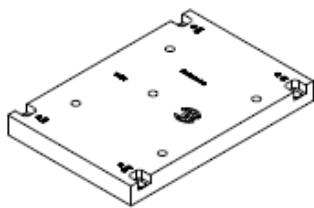
LEARN MORE ABOUT HOLZWORTH



**WERLATONE®**  
SINCE 1965

## INTRODUCING 80-1000 MHz, 600 W, 90° HYBRID COUPLER

**QH11489**



[Click Here For Datasheet](#)

### Key Specifications

- 80-1000 MHz
- 600 W CW at +50°C Baseplate Temperature \*
- 500 W CW at +70°C Baseplate Temperature \*
- 0.6 dB Max Insertion Loss
- 17 dB Min Isolation, 18 dB Typ
- 0.65 dB Typ Amplitude Balance

[Contact MELCOM](#) for detailed specification, pricing and availability

LEARN MORE ABOUT WERLATONE



## INTRODUCING S5180 VECTOR NETWORK ANALYSER - 2 PORT 18 GHz

### S5180



[Click Here For Datasheet](#)

### Key Specifications

- PC Interfaced via USB
- Frequency Range: 100 kHz to 18GHz
- Measured parameters: S11,S21, S12, S22
- Sweep types: Linear frequency, log frequency, segment, power sweep
- Dynamic range: 135 dB
- Impedance: 50 Ohm
- Full software functionality included

### New Bias Tees

- [CMTBTS65A](#) - 10 MHz to 6.5 GHz
- [CMTBTHC65](#) - High current, 10 MHz to 6.5 GHz
- [CMTBTS09](#) - 10 MHz to 9 GHz
- [CMTBTS20](#) - 10 MHz to 20 GHz

[Contact MELCOM](#) for detailed specification, pricing and availability

LEARN MORE ABOUT COPPER MOUNTAIN TECHNOLOGIES



## PICONICS LAUNCH NEW 50 AWG SERIES BROADBAND CONICAL INDUCTORS

### - X Series Broadband Conical Inductor

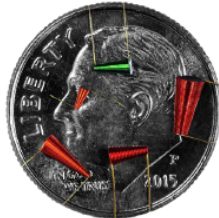
### Key Specifications



[Click Here For Datasheet](#)

- Adjusted loading for higher RF power applications
- Current handling up to 2.75 A
- Low insertion loss across band <-0.35 dB Typical

#### **G5 Series High Current Broadband Conical Inductor**



[Click Here For Datasheet](#)

#### **Key Specifications**

- Broadband performance to 36 GHz
- High inductance up to 23  $\mu$ H
- Current handling up to 2.75 A
- Low insertion loss across band <0.35 dB Typical

#### **G5 Series Low Current Broadband Conical Inductor**



[Click Here For Datasheet](#)

#### **Key Specifications**

- Broadband performance past 65 GHz
- Low inductance with current handling up to 500 mA
- Micro size for small packages
- Low insertion loss across band <0.35 dB Typical

#### **G100 Series Broadband Conical Inductor**



[Click Here For Datasheet](#)

#### **Key Specifications**

- Broadband performance past 40 GHz
- High impedance across band
- 100  $\mu$ m Au plated leads for wire bonding applications
- Low insertion loss across band <0.35 dB Typical

[Contact MELCOM](#) for detailed specification, pricing and availability

LEARN MORE ABOUT PICONICS



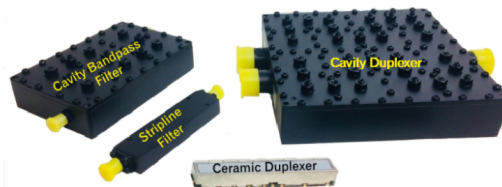
**INTRODUCING NEW RANGE OF RF/MICROWAVE & MILLIMETRE WAVE  
FILTER PRODUCTS**





MELCOM INTRODUCE NEW RANGE OF  
RF/MICROWAVE & MILLIMETRE WAVE FILTER  
PRODUCTS

- COST EFFECTIVE SOLUTIONS
- ONE STOP SOURCE FOR FILTER REQUIREMENTS
  - QUICK TURNAROUND
- OFF THE SHELF & BESPOKE DESIGNS AVAILABLE
  - SUITABLE FOR LTE & 5G REQUIREMENTS



Melcom Filter Products are available in Coaxial,  
Surface Mount & Waveguide Configurations depending on  
Specification & Filter Type

T: +44(0)1932 566544 E: [melcomsales@melcom.co.uk](mailto:melcomsales@melcom.co.uk) [www.melcom.co.uk](http://www.melcom.co.uk)  
Melcom Electronics Ltd, Quantum House, 59-61 Guildford Rd, Chertsey, Surrey KT16 9AX

[Contact MELCOM](#) for detailed specification, pricing and availability

**LEARN MORE ABOUT MELCOM**

Melcom, Quantum House, 59-61 Guildford Street, Chertsey, Surrey KT16 9AX United Kingdom

[SafeUnsubscribe™ {recipient's email}](#)

[Forward this email](#) | [Update Profile](#) | [About our service provider](#)

Sent by [melcomsales@melcom.co.uk](mailto:melcomsales@melcom.co.uk) in collaboration with

**Constant Contact®**

Try it free today