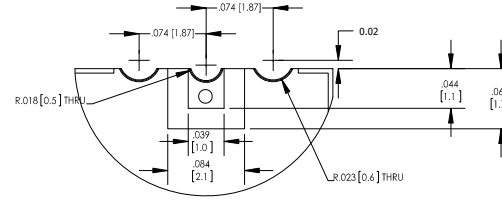
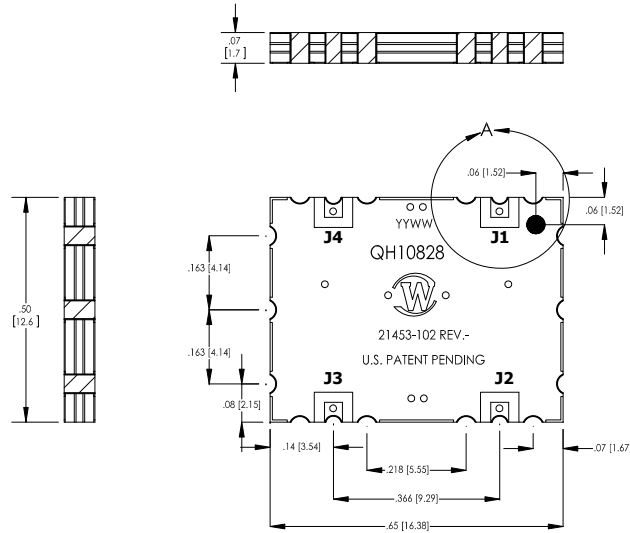


**RESTRICTION ON USE, DUPLICATION OR DISCLOSURE OF PROPRIETARY INFORMATION**  
 This document contains proprietary information which is the sole property of Werlatone, Inc.

REVISION HISTORY			
REV.	REVISION RECORD	DATE	APPROVED
-	PRE-RELEASE	2/1/2017	CS
A	ECN9328	6/1/2017	CS



DETAIL A  
SCALE 8 : 1



Port Configurations				
	J1	J2	J3	J4
Input	-3 dB, 0°	-3 dB, -90°	Isolated	Isolated
-3 dB, 0°	Input	Isolated	Isolated	-3 dB, -90°
-3 dB, -90°	Isolated	Input	Input	-3 dB, 0°
Isolated	-3 dB, -90°	-3 dB, 0°	Input	Input

**ELECTRICAL SPECIFICATIONS**

Frequency: 1000 - 8000 MHz  
 Power: 60 Watts CW  
 Insertion Loss: 0.9 dB Max.  
 Amplitude Balance: ±0.7 dB Max. 1200-8000 MHz  
 ±1.5 dB Max. 1000 - 1200 MHz  
 Phase Balance: ± 5° Max.  
 VSWR: 1.4 : 1  
 Isolation: 17 dB Min.

**PRELIMINARY DWG. SPECIFICATIONS MAY CHANGE PRIOR TO DWG RELEASE.**

**NOTES: UNLESS OTHERWISE SPECIFIED**

- SURFACE MOUNT UNIT**
- SURFACE FINISH: IMMERSION SILVER (RoHS Compliant). OTHER SURFACE FINISHES AVAILABLE UPON REQUEST.**
- SEE SURFACE MOUNT TECH NOTE FOR INSTALLATION GUIDELINES.**

UNLESS OTHERWISE SPECIFIED		DWN	DATE	<b>WERLATONE SINCE 1965</b> 17 Jon Barrett Rd Patterson, NY 12563
• INTERPRET DRAWING IN ACCORDANCE WITH MIL-STD-100 • DIMENSIONING PER ASME Y14.3M-2009 • PARABOLICAL DIMS FOR REF ONLY • DIMENSIONS ARE IN INCHES (mm) • DIMENSIONAL LIMITS APPLY BEFORE PROCESSES • TOLERANCES: ANGLES ± .2° 3 PL ± .005 (.13) 2 PL ± .015 (.4)		MB	2/1/2017	
NEXT ASSY		CHK	DATE	<b>OUTLINE</b> SIZE: B 28812 CAGE CODE: 21453-500 SCALE: 4:1
QH10828 USED ON		BW	2/1/2017	
APPLICATION		ENGR	DATE	REV: A SHEET 1 OF 1
THIRD ANGLE PROJECTION		MB	2/1/2017	
		QA	DATE	
		RLSE	DATE	