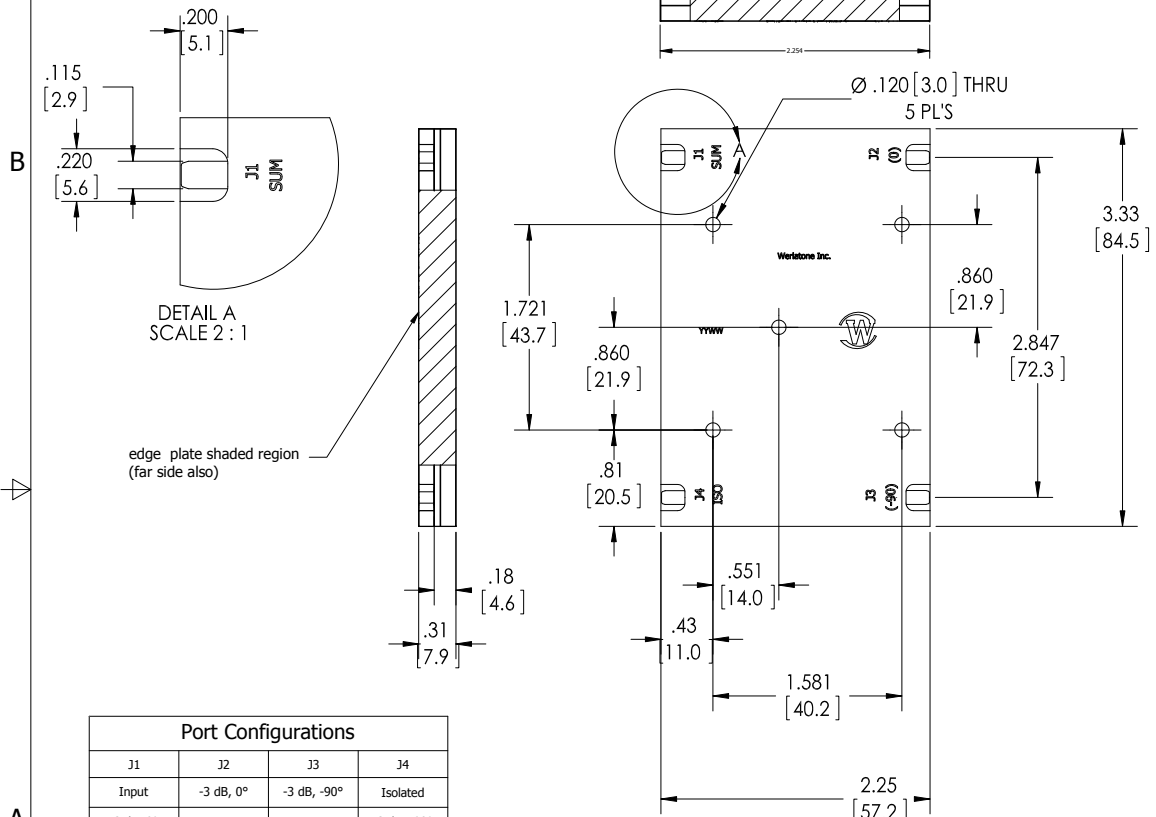
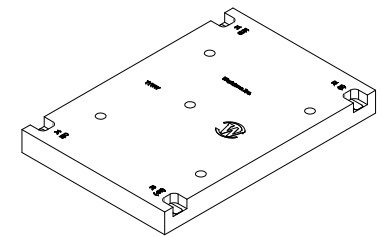


RESTRICTION ON USE, DUPLICATION OR DISCLOSURE OF PROPRIETARY INFORMATION
 This document contains proprietary information which is the sole property of Werlatone, Inc.



REVISION HISTORY			
REV.	REVISION RECORD	DATE	APPROVED
-	INITIAL RELEASE	11/30/2017	CS



Model QH11489-Ag
90° Hybrid Coupler

- Electrical Specifications:**
- Frequency: 80 – 1000 MHz
 - Power: 600 W CW *
 - Insertion Loss: 0.6 dB Max.
 - VSWR: 1.40:1 Max.
 - Phase Balance: ± 5° Max.
 - Amplitude Balance: ± 0.8 dB Max.
 - Isolation: 17 dB Min.
 - 18 dB Typ.

* 600 W CW at +50°C Baseplate Temperature
 * 500 W CW at +70°C Baseplate Temperature

Port Configurations			
J1	J2	J3	J4
Input	-3 dB, 0°	-3 dB, -90°	Isolated
-3 dB, 0°	Input	Isolated	-3 dB, -90°
-3 dB, -90°	Isolated	Input	-3 dB, 0°
Isolated	-3 dB, -90°	-3 dB, 0°	Input

- NOTES: UNLESS OTHERWISE SPECIFIED**
- DROP IN- STYLE UNIT.
 - SURFACE FINISH: Immersion Silver (RoHS Compliant)
 - OTHER SURFACE FINISHES AVAILABLE UPON REQUEST
 - HATCHED AREAS DENOTE METALLIZATION

UNLESS OTHERWISE SPECIFIED		DWN	DATE	WERLATONE SINCE 1965	17 Jon Barrett Rd Patterson, NY 12563
• INTERPRET DRAWING LAW MIL-STD-100 • DIMENSIONING PER ASME Y14.5M-2009 • PARENTHEICAL INFO FOR REF ONLY • DIMENSIONAL LIMITS APPLY BEFORE PROCESSES • TOLERANCES: ANGLES ± 2° 3 PL ± .005 (.13) 2 PL ± .015 (.41)		PLP	11/30/2017		
		ENGR	DATE	TITLE	
		PLP	DATE	SIZE	
		QA	DATE	CAGE CODE	DWG NO
		RLSE	DATE	SCALE	
NEXT ASSY USED ON APPLICATION		THIRD ANGLE PROJECTION		B 28812 1:1	
				SHEET 1 OF 1	